

SEMÂİ
OP:109

RAST
NEVBAHAR

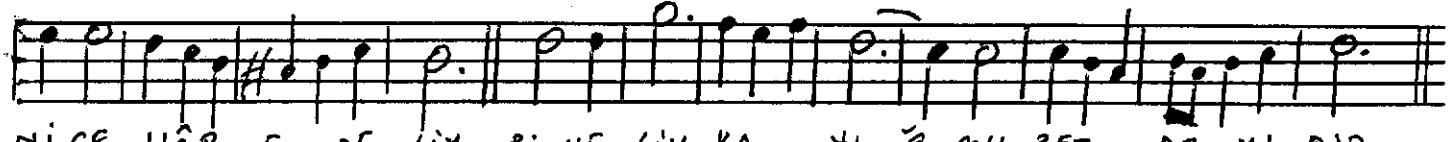
GÜFTE : FÂZİL
BESTE : DR.A. BERÇEKER
12-9-1959



K O D A



NEVBAHAR ER Dİ SAFÂ MEVSİ Mİ DİR BÖYLE DENLER DE



NİCE HÂB E DE LİM Bİ NE LİM KAYI BÂ SOH BET DE Mİ DİR



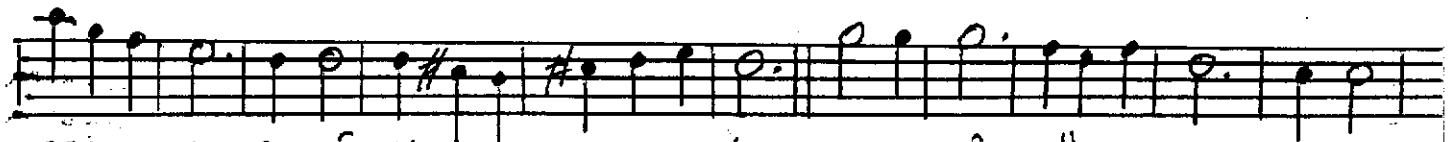
TÂ SE HER SAZİ LE MEH TAB E DE LİM



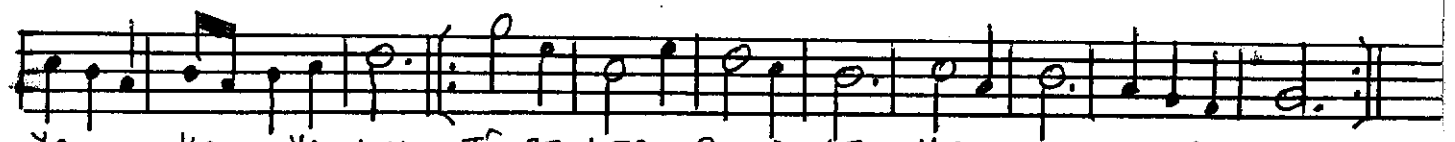
ARA NÂĞME



ARA NÂĞME ŞEKKİ LE Â BÜ HEVÂ YA U YA LİM VAKTİ DİR



ZEV KÜ SAFÂ YA DO YA LİM MEHİ SÂ RÜ NE TARAB



YA KÜ YA LİM TÂ SE HER SAZİ LE MEH TAB E DE LİM

NEVBAHAR ERDİ SAFÂ MEVSİMİDİR
BÖYLE DENLERDE NİCE HÂB EDELMİ?
BİNE LİM KAYI BÂ SOH BET DENİDİR
TÂ SEHER SAZ İLE MEHTÂB EDELMİ

GECEDEM NÜŞ EDELMİ SAH BÂ YI
ATA LİM CÂMA GÂM-İ FERDÂ YI
VERELİM VELVELESE DERYÂ YI
TÂ SEHER SAZ İLE MEHTÂB EDELMİ

ŞEKKİ İLE ÂBÜ HEVÂ YA UYALIM
VAKTİDİR ZEVK U SAFÂ YA DOYALIM
NE HİŞÂ R-Ü NE TARAB YA KOYALIM
TÂ SEHER SAZ İLE MEHTÂB EDELMİ

OLA KAYIKTA İKİ SÂZENDE,
BİR İKİ NÂĞMESİ HÂŞ HÂNEDE,
BİR DE OL ŞÜH İLE FÂZİL BEMDE,
TÂ SEHER SAZ İLE MEHTÂB EDELMİ